

**CAMP MOSES IS IN RUSSELL, MA.
at Russell Pond**

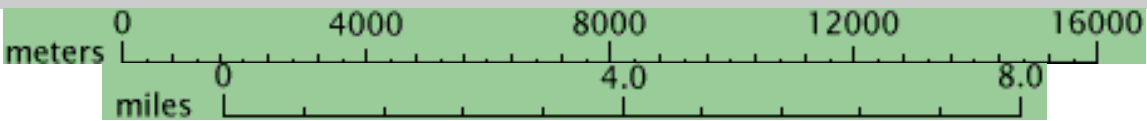
Map center is 42.1321°N, 72.838°W - UTM Zone 18, N 4666488, E 678688

1:25,000 1:50,000 1:100,000 **1:200,000**

Small

Medium

Large



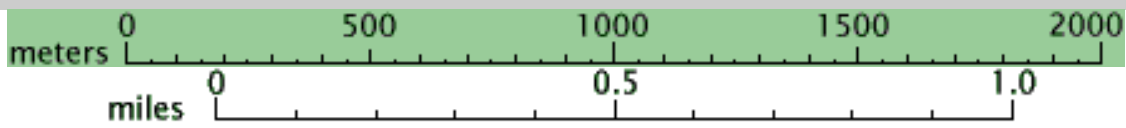
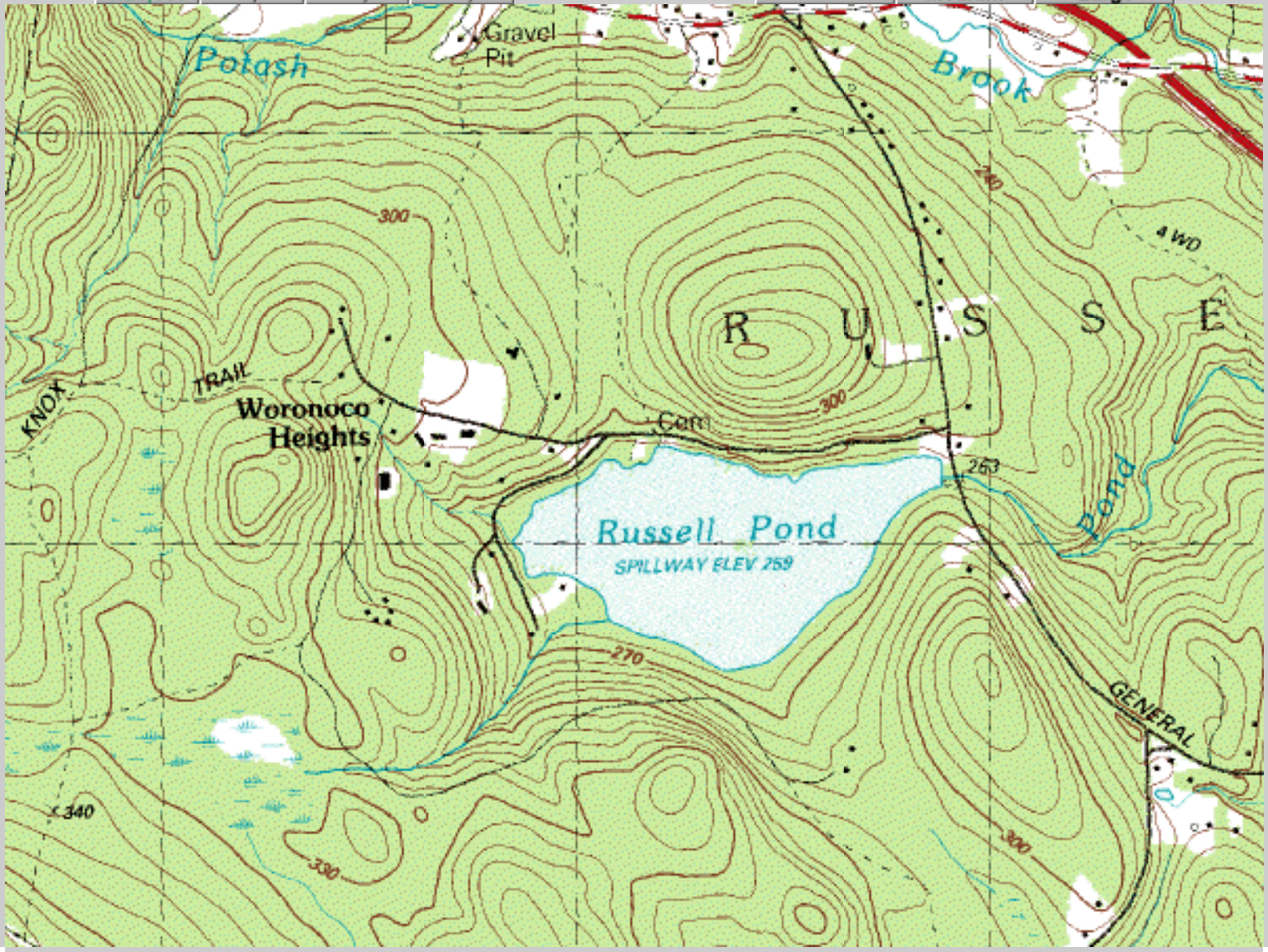
Map center is 42.1566°N, 72.8679°W - UTM Zone 18, N 4669155, E 676148

1:25,000 1:50,000 1:100,000 1:200,000

Small

Medium

Large



From Westfield, go on General Knox to Russell Pond (Camp Moses) Exit.